

ESWIM

ELECTRONIC SWIMMING POOL PUMP



DISCOVER THE SVRS MODEL WITH ANTI-ENTRAPMENT SAFETY SYSTEM



TECHNICAL DATA

Operating range: 30 m³/h

Maximum head: 15,4 m

Pumped liquid: clean or slightly dirty water with suspended solid bodies, long fibers; particularly aggressive water with high percentages of chlorine / bromine and PHMB (Polyhexamethylene Biguanide) or water treated with chlorine electrolysis process

PH Range: 6,5 - 8,4

Pumped liquid temperature range: da +4°C a +40°C

Maximum ambient temperature: +50°C

Maximum operating pressure: 2,5 bar / 250 kPa

Protection class of the motor: IP X5

Insulation class: F

Impeller material: techopolimer

Standard voltage: 230 V 50 Hz o 60 Hz

Power cord (m) and plug: not available

Installation: portable or fixed

Certifications: energy Star, SVRS (only SVRS version)

Eswim and Eswim SVRS are electronic pumps with inverters for filtration in swimming pools or fish farms, including salt water, to be used in domestic and residential environments. Silent, programmable and equipped with a large inspectable pre-filter. The 12-pin control board of Eswim and Eswim SVRS makes them compatible with any control panel, analog or digital.

CONSTRUCTION FEATURES OF THE PUMP

High capacity strainer basket, with easy to remove cover with filter simple to pull out and cleaning. The filter is in antioxidant material for quick and easy visual inspection. Equipped with rubber feet to reduce vibrations. Bayonet lid closure.

CONSTRUCTION FEATURES OF THE MOTOR

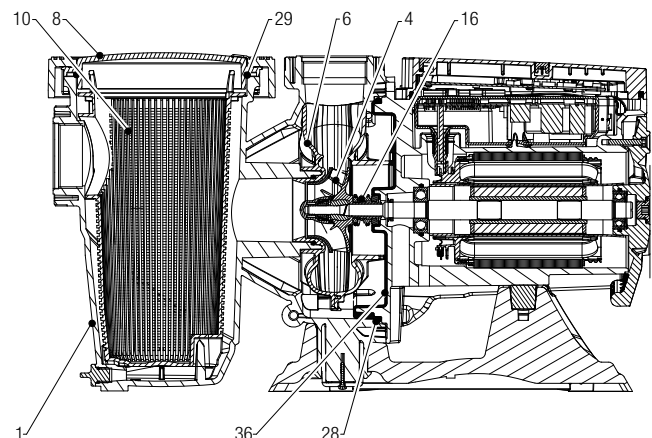
Synchronous permanent magnet motor, brushless, with encapsulated magnetized rotor, cooled by the pumped liquid (without cooling fan), with a noise level of only 45 dB. The aluminum motor casing is coated with elastomer.

ELECTRONIC FEATURES

The remote control is possible via 0-10 V, 4-20 mA and PWM signal. Thanks to the variable frequency drive, the pumps can operate at constant speed or constant flow (without the use of sensors) to optimize performance and minimize energy consumption. The control panel has 4 buttons with 8 programmable speeds and status and alarm LEDs. There is a menu for weekly and seasonal programming. The SVRS version is equipped with a software function that disables pump suction if an obstruction is detected. "SVRS" is an acronym that means Safety Vacuum Release Systems.

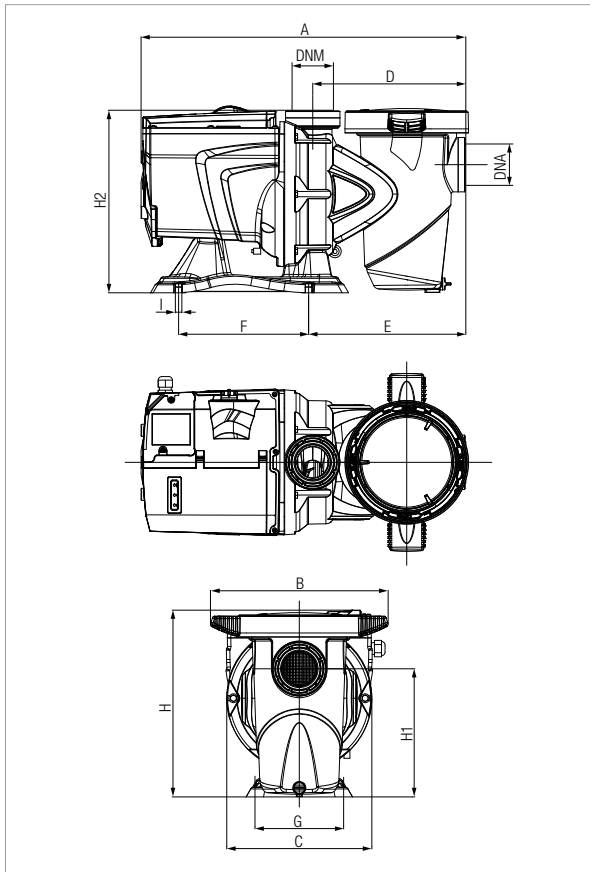
MATERIALS

N.	PARTS	MATERIALS
1	PUMP BODY	REINFORCED TECHNOPOLYMER
4	IMPELLER	REINFORCED TECHNOPOLYMER
6	VOLUTE	REINFORCED TECHNOPOLYMER
8	STRAINER COVER	POLYCARBONATE
10	STRAINER	TECHNOPOLYMER
16	MECHANICAL SEAL	CARBON/ALUMINA/NBR/AISI316
28	O-RING	NBR
29	O-RING	NBR
36	SEAL HOLDING DISC	EPDM

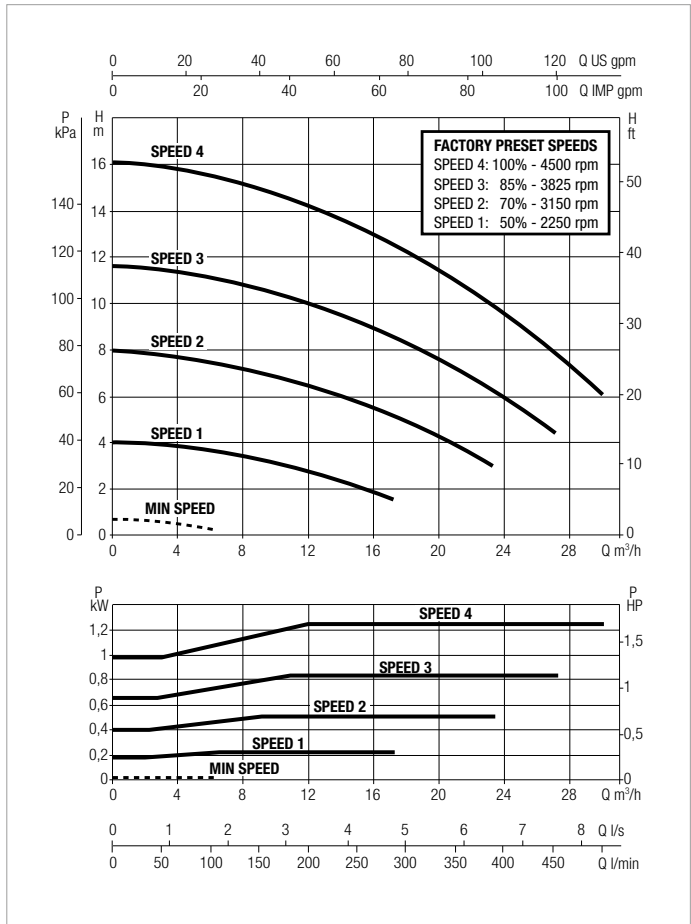


ESWIM 150 - SWIMMING POOL PUMP

Pumped liquid temperature range: up to 40 °C - Maximum ambient temperature: +50 °C



The performance curves are based on kinematic viscosity values = 1 mm²/s and density equal to 1000 kg/m³. Curve tolerance according to ISO 9906.



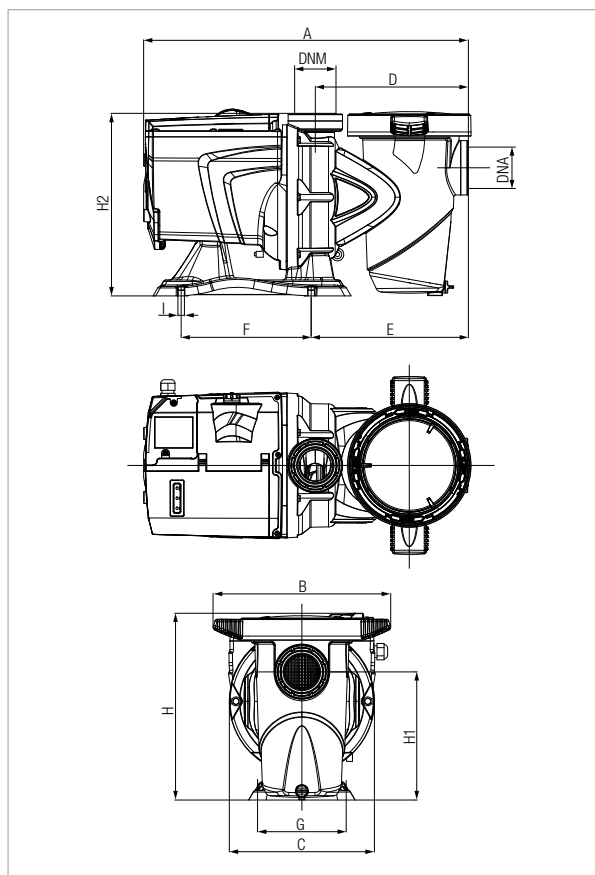
MODEL	Q= m³/h	0	6	9	12	15	18	21	24	27	30
	Q=l/min	0	100	150	200	250	300	350	400	450	500
ESWIM 150	H (m)	15,9	15,7	15,2	14,4	13,4	12,2	10,9	9,4	7,9	6,3
ESWIM 150 SVRS	H (m)	15,9	15,7	15,2	14,4	13,4	12,2	10,9	9,4	7,9	6,3

MODEL	POWER INPUT 50 Hz	P1 MAX kW	P2 NOMINAL		I _n A	NOISE LEVEL - MEDIUM WORKING POSITION db (A)
			kW	HP		
ESWIM 150	230 V	1,25	1,1	1,5	5,6	50 dB(A)
ESWIM 150 SVRS	230 V	1,25	1,1	1,5	5,6	50 dB(A)

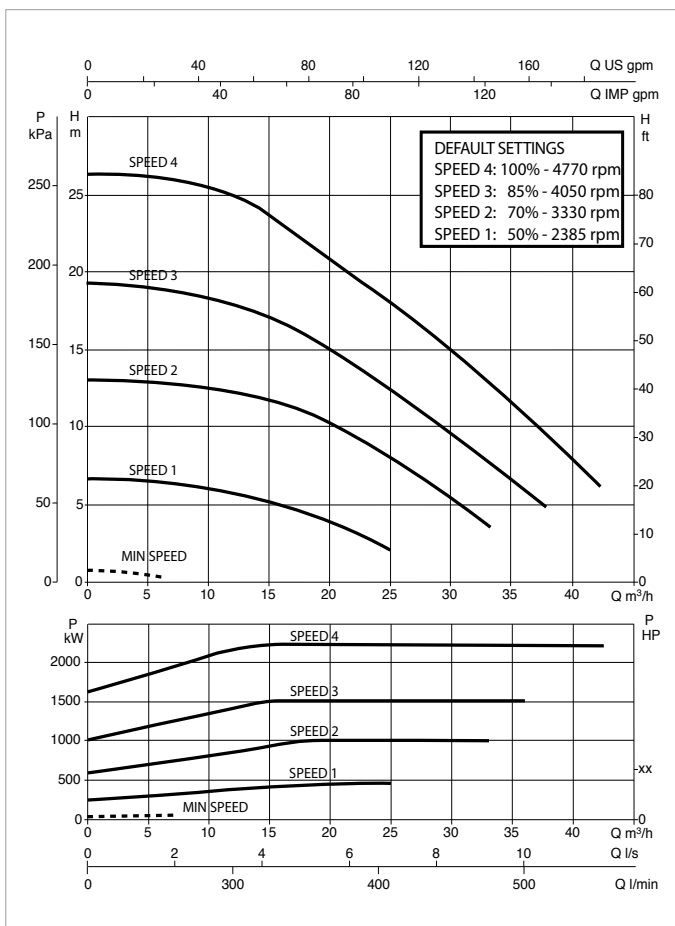
MODEL	A	B	C	D	E	F	G	H	H1	H2	I	DNA	DNM	PACKING DIMENSIONS			GROSS WEIGHT kg	Q.TY X PALLET
														L/A	L/B	H		
ESWIM 150	550	300	245	259	266	220	150	316	217	309	11	2" F	2" F	720	350	430	19	8
ESWIM 150 SVRS	550	300	245	259	266	220	150	316	217	309	11	2" F	2" F	720	350	430	19	8

ESWIM 300 - SWIMMING POOL PUMP

Pumped liquid temperature range: up to 40 °C - Maximum ambient temperature: +50 °C



The performance curves are based on kinematic viscosity values = 1 mm²/s and density equal to 1000 kg/m³. Curve tolerance according to ISO 9906.



MODEL	Q= m ³ /h	0	5	10	15	20	25	30	35	40	42,6
	Q=l/min	0	83	166	250	333	416	500	583	666	710
ESWIM 300	H (m)	26	25,4	24,8	23,2	20,6	17,4	14,4	11,5	7,8	6

MODEL	POWER INPUT 50 Hz	P1 MAX kW	P2 NOMINAL		In A	NOISE LEVEL - MEDIUM WORKING POSITION db (A)
			kW	HP		
ESWIM 300	230 V	2,25	1,9	2,6	10	44 dB(A)

MODEL	A	B	C	D	E	F	G	H	H1	H2	I	DNA	DNM	PACKING DIMENSIONS			GROSS WEIGHT kg	Q.TY X PALLET
														L/A	L/B	H		
ESWIM 300	574	304	290	269	276	220	150	354	252	344	11	2" F	2" F	720	350	430	21,3	6



On-line selection tool

Authorized Distributor:



PT. DIGDAYA ABADI BERSAMA

PIK Avenue Mall, Lantai 6
Jl. Pantai Indah Barat No. 1
Kamal Muara, Penjaringan
Jakarta Utara 14470

Phone: +62 21 2267 4247
Whatsapp: +62 811 9889 5527
Email: info@digdayaabadi.com

digdayaabadi.com